



how to

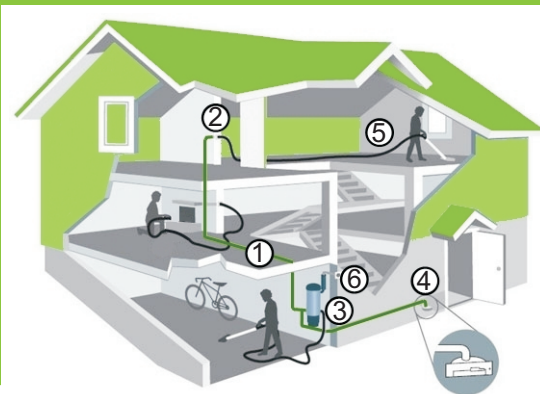
design a central vacuum system

1. unit location

The most popular locations for the unit are the garage, utility room, under the stairs, loft, basement, plant room or in a cupboard.

The unit must be 30cm from the top of the ceiling and 30cm from the floor, and have enough space either side to remove the bucket.

You only need to have an exhaust to the outside if the unit is located in a popular room such as the kitchen or utility room. The exhaust should be no longer than 3m and have an exhaust vent flap to prevent vermin getting into the system.



2. inlet locations

Existing Properties

Start with a piece of string as long as the hose (9m). Hold one end where the inlet will be located in the hall way (or a central room), find a second person to see how far the 9m string will reach. If the string doesn't reach all the corners of the rooms you will require a second or third inlet on the ground floor. Large spaces such as kitchen-diners may require an inlet per room.

New Builds

The process above can be carried out on a smaller scale with a set of plans from your Architect. Find out what scale the plans are so you know how long to cut the string.

Remember to allow for furniture when calculating the number of inlets you will require.

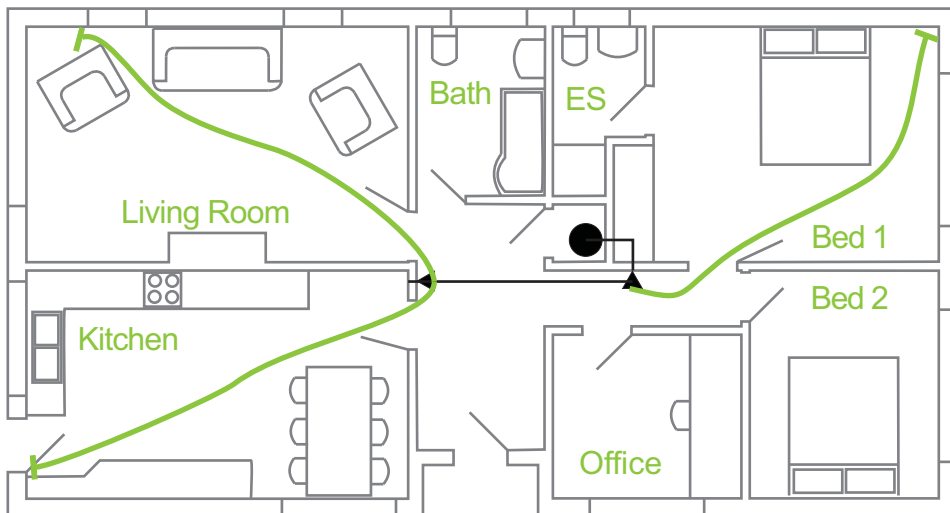
- 1 Ductwork
- 2 Wall Inlet
- 3 Appliance utility inlet
- 4 Kitchen VacPan Inlet
- 5 Hose, wand and vacuum attachment
- 6 Appliance exhausted to outside



3. example of inlet locations

If you require any more components they can be ordered from us on:

 0845 260 0123



- CV Hose
- CV Pipe
- ◀ CV Inlet
- CV Unit

